



**SAVE THESE INSTRUCTIONS  
CONSERVE ESTAS INSTRUCCIONES  
VEUILLEZ CONSERVER CES DIRECTIVES**

Products manufactured under quality management system registered to ISO 9001:2000  
Los productos están fabricados según el sistema de gestión de calidad registrado con la norma ISO 9001:2000  
Produits fabriqués selon un système de gestion de la qualité ISO 9001:2000

Printed in China/Impreso en China/Imprimé en Chine  
Model no./N.º de modelo/Nº de modèle :  
**Model No. : 1800381, 1800382, 1800383, 1800384**  
SKU no./N.º de SKU/Nº SKU :  
**1788560**



©2011 Rubbermaid Commercial Products LLC  
A **NewellRubbermaid** Company  
Rubbermaid Commercial Products LLC  
Winchester, VA 22601 U.S.A.  
[www.rubbermaidcommercial.com](http://www.rubbermaidcommercial.com) #1788560

## **Auto Door™**

### **Owner's Manual**

Operating and Maintenance  
Instructions

## **Auto Door™**

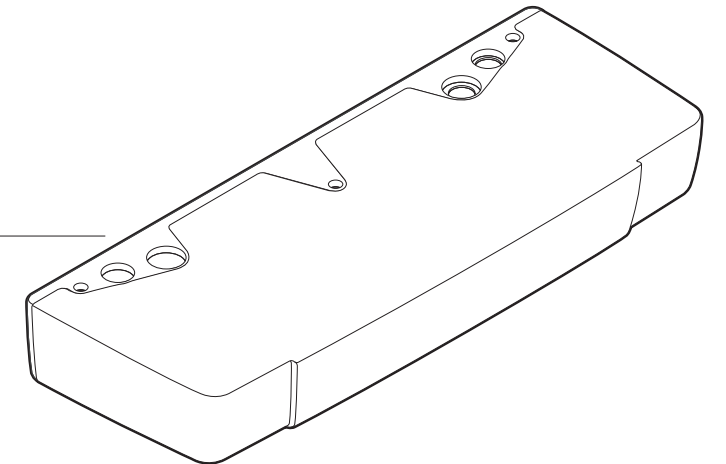
### **Manual Del Propietario**

Instrucciones de Funcionamiento y  
de Mantenimiento

## **Auto Door™**

### **Le Manuel du Propriétaire**

Instructions d'Utilisation et d'Entretien



## **FOR COMMERCIAL USE**

## **PARA USO COMMERCIAL**

## **UTILISATION COMMERCIALE**

Customer Service • Atención al Cliente • Service Clientèle  
**1-800-347-9800**  
[www.rubbermaidcommercial.com](http://www.rubbermaidcommercial.com)

## IMPORTANT SAFETY INSTRUCTIONS

## SAVE THESE INSTRUCTIONS

**WARNING: TO REDUCE THE RISK OF SEVERE INJURY OR DEATH:**

- **Read And Follow All Installation Instructions**
- If this product is installed incorrectly or the door is adjusted incorrectly, the product will not operate properly and could cause injury and/or equipment damage. In such cases, the manufacturer's warranty becomes void and the manufacturer and seller decline all liability ensuing from improper installation or adjustment.
- Installation of this product must be performed by a licensed and insured professional.
- Permanent wiring is to be employed as required by local codes.
- **DO NOT** connect the Auto Door to source of power until instructed to do so.
- Always disconnect power before removing Auto Door cover.
- The Auto Door should only be installed in an opening capable of providing proper structural support. Install only on a properly operating door.
- The Auto Door must be inspected periodically using the safety checklist in this manual.
- The door must be adjusted as described in this manual before installation of the Auto Door. Periodically check the adjustment control mechanism.

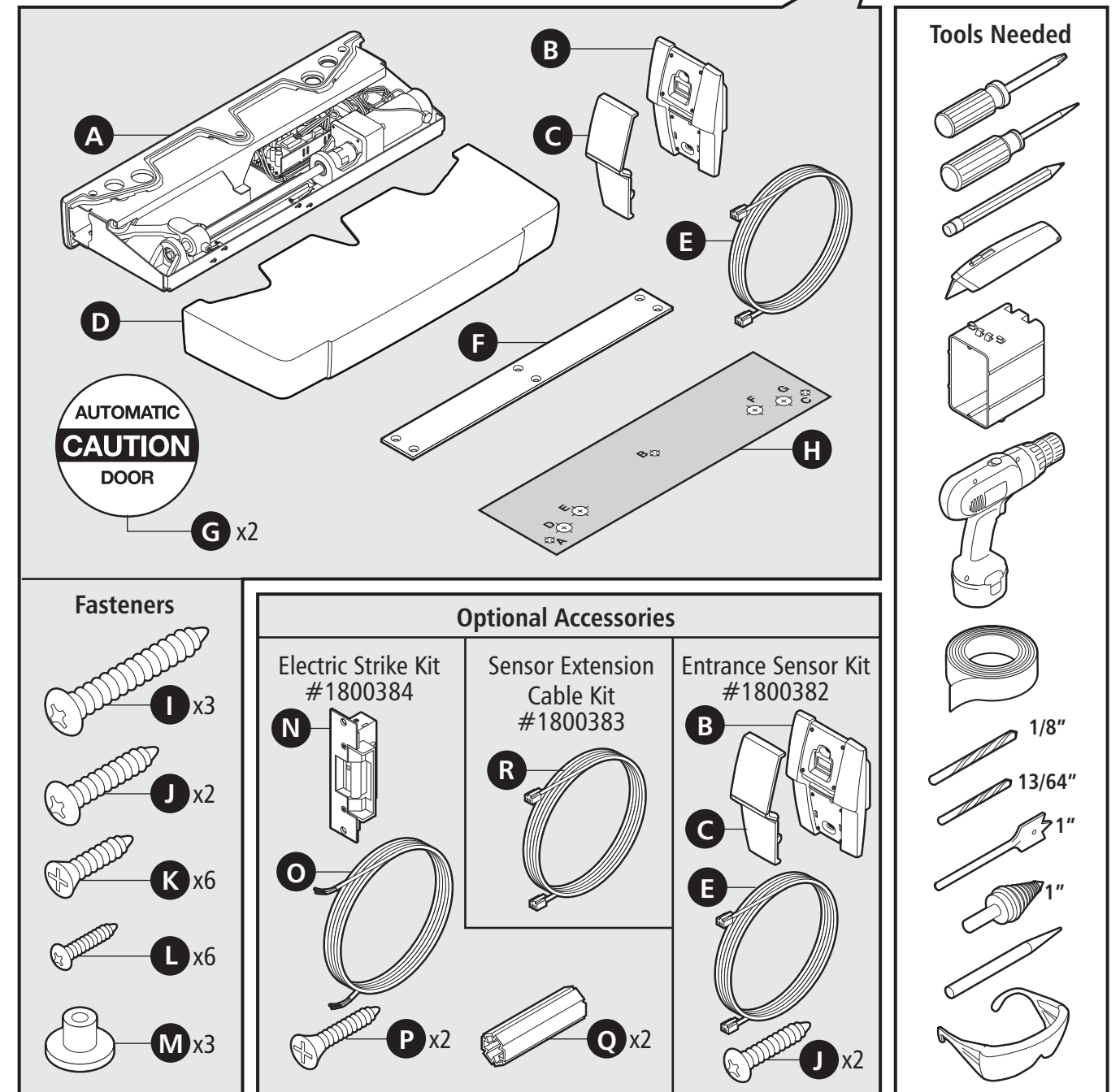
- Ensure power supply is available in ceiling above door jamb (120 volts; 60 hertz).
- Auto Door is intended for use on interior pedestrian doors between 34"-42" wide with a maximum weight of 170 lbs.
- Do not place hands near Auto Door arm when operating.

**Ensure that the existing door meets the following settings and requirements:**

- The door has a UL listed door closer mounted on the pull side of the door (if not remove and reinstall).
- Refer to your door closer instruction manual to adjust the door closer so that the door opening resistance is less than 7 lbs., measured at the latching edge of the door. The door should close no faster than 5 seconds. Adjust the doors closing speed accordingly.
- Make sure the door hinges are not damaged, are in proper working condition, and lubricated regularly.
- The door does not operate with a latch mechanism and opens simply by pushing or pulling, unless you use an electric strike (#1800384).
- Check width of top door stop. For normal mounting, ensure that the width is at least 3 1/2" wide. If the width is less than 3 1/2" wide, a spacer must be used to securely mount. If width is the less than 1 5/8", remove top door stop or do not install unit (adequate mounting requirements not available for secure installation).

## Package Contents

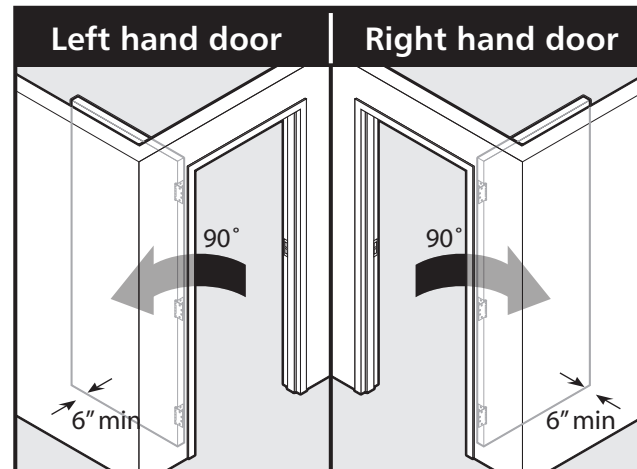
Please confirm that all items shown in the image below are included in the packaging.  
If any parts are missing, please call customer service at **1-800-347-9800**.



## Parts List

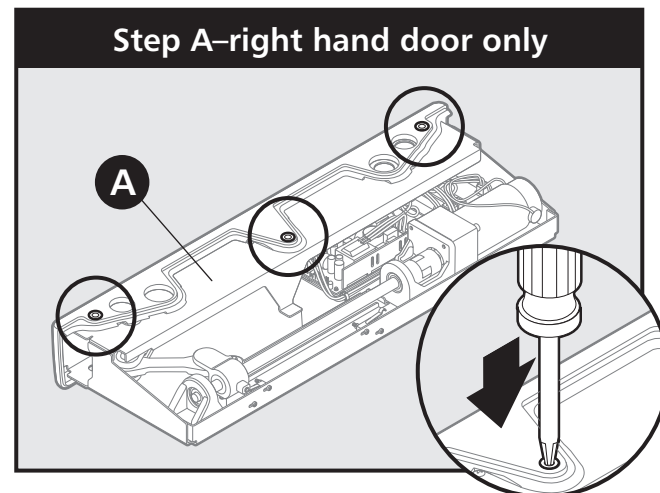
- A** Auto Door main unit
- B** sensor plate
- C** sensor cover
- D** main unit cover
- E** 20' sensor cable
- F** roller plate
- G** caution labels
- H** drilling template
- I** 1/4"-14 x 1-1/2"  
Phillips pan head  
screw type AB
- J** #6-32 x 1"  
Phillips pan head  
machine screw
- K** #8"-18 x 1" Phillips  
flat head countersunk  
screw type AB
- L** #6-20 x 3/4"  
Phillips pan head  
screw type AB
- M** spacer
- N** electric strike
- O** electric strike cable
- P** electric strike screws
- Q** electric strike anchors
- R** sensor extension cable

## Before Installation

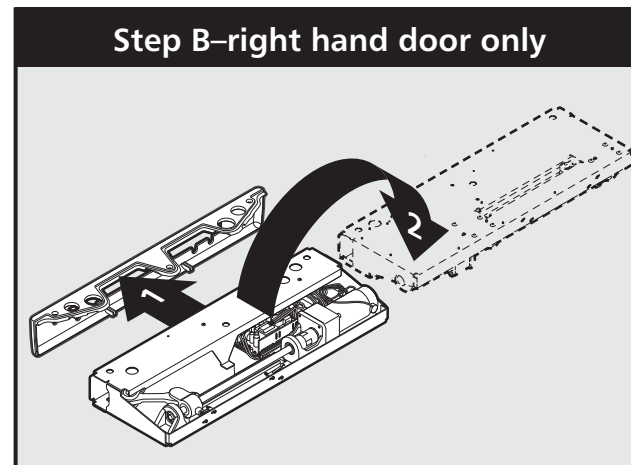


Determine the correct orientation of the unit (right or left hand swinging door).

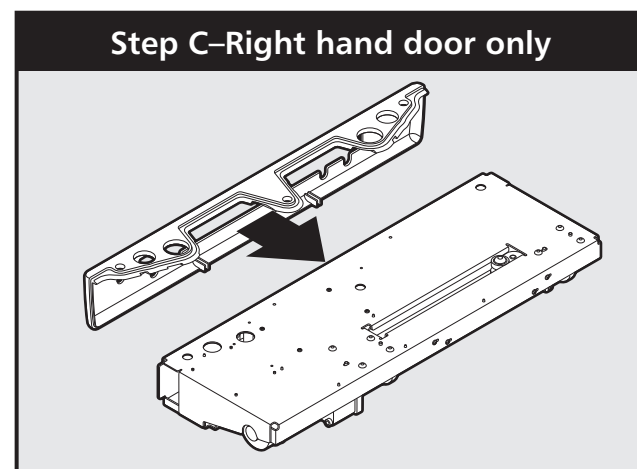
**IMPORTANT:**  
The AutoDoor is supplied in the **left hand** configuration. Refer to steps A through D only if you require a **right hand** configuration.



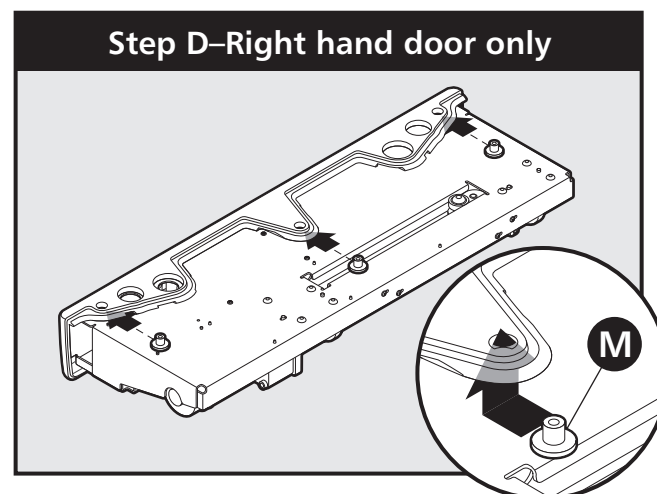
Using a screwdriver, push three spacers through the inside of the main unit.



Remove cover and turn main unit over 180 degrees.

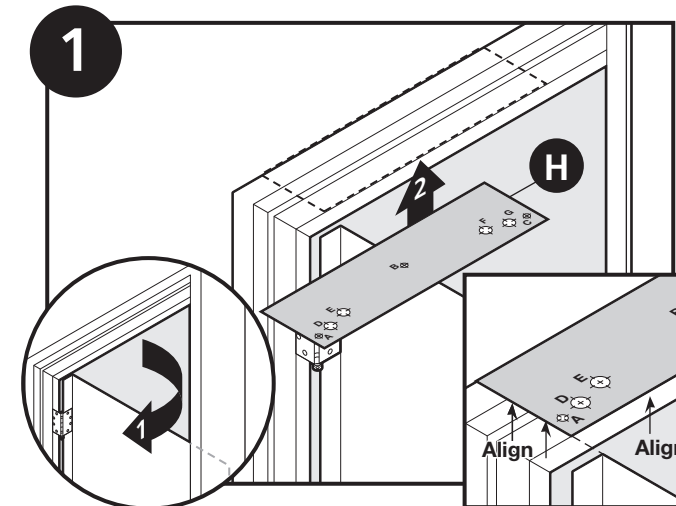


Replace cover.

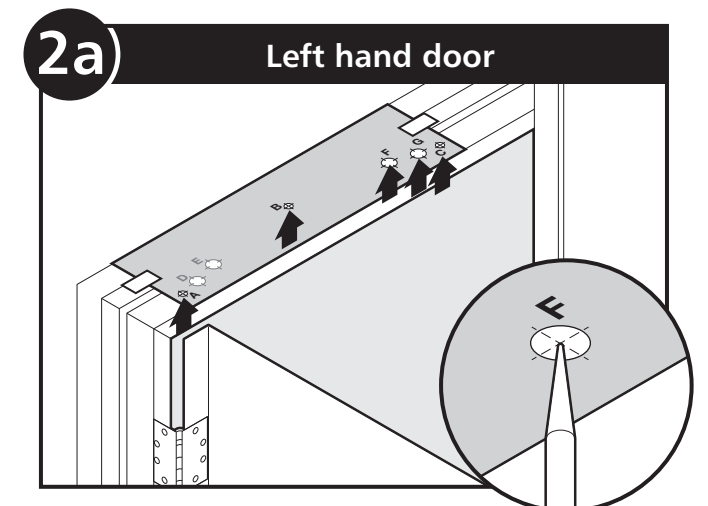


Insert the three spacers from the inside of the unit through cover into and up in the main unit. Hold spacers in with adhesive tape.

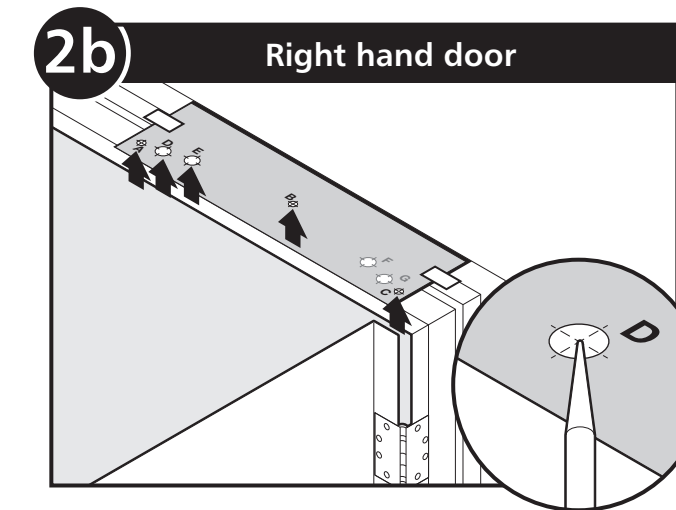
## Installation



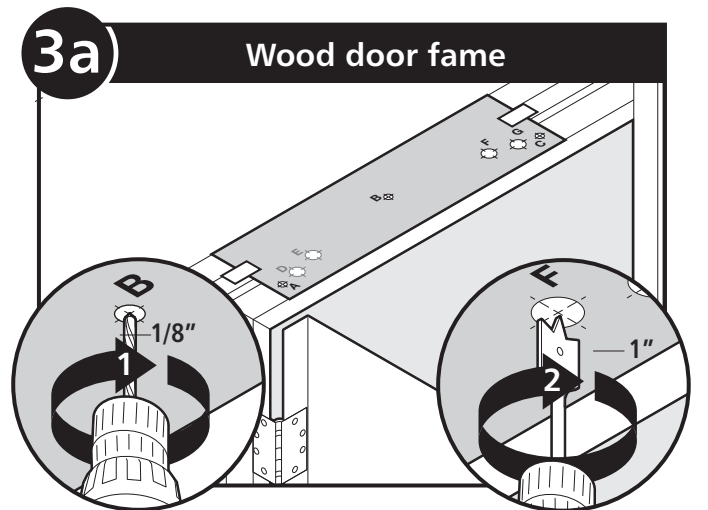
Hold the door open 90°. Place template against the door jamb aligning front edge of template with face of the door in closed position, and the side of the template aligned with the face of the 90° door.



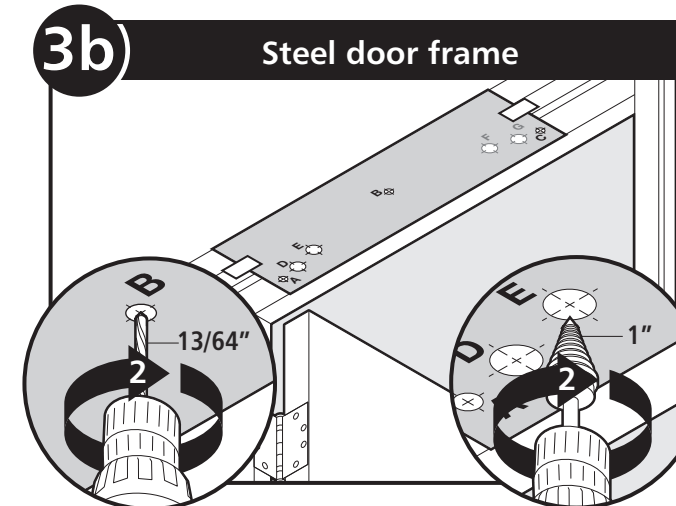
Tape template in place. For left hand door, mark hole locations **A, B, C, F** and **G** on the door jamb with an awl or center punch.  
*Note: Marking letters F and G for identification is recommended.*



Tape template in place. For right hand door, mark hole locations **A, B, C, D,** and **E** on the door jamb with an awl or center punch.  
*Note: Marking letters D and E for identification is recommended.*



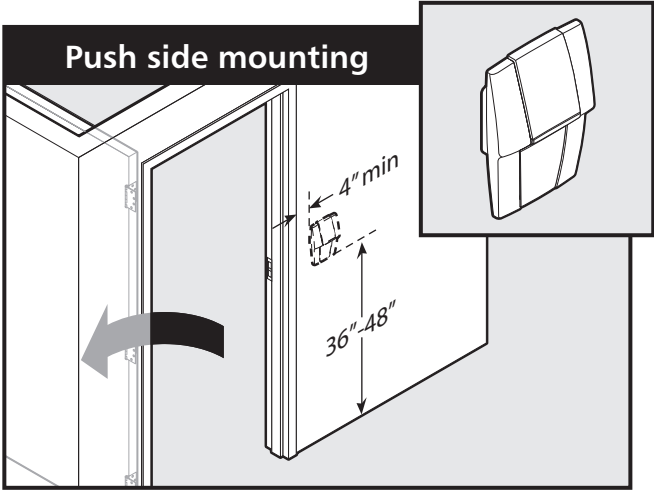
For wood door frames use 1/8" drill bit for holes A, B and C (mounting holes). Use 1" wood drill bit for holes F and G (D and E for right hand door).



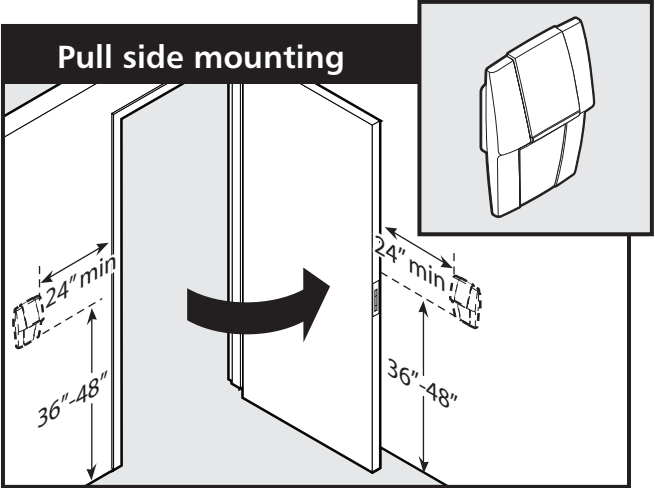
For steel door frames use 13/64" drill bit for holes A, B and C (mounting holes). Use 1" step drill bit for holes D and E (F and G for right hand door).

Installation

Sensor must be installed in a location which can be observed by the person operating the sensor. Sensor must be in a position such that user is prevented from coming into contact with the door while using sensor.



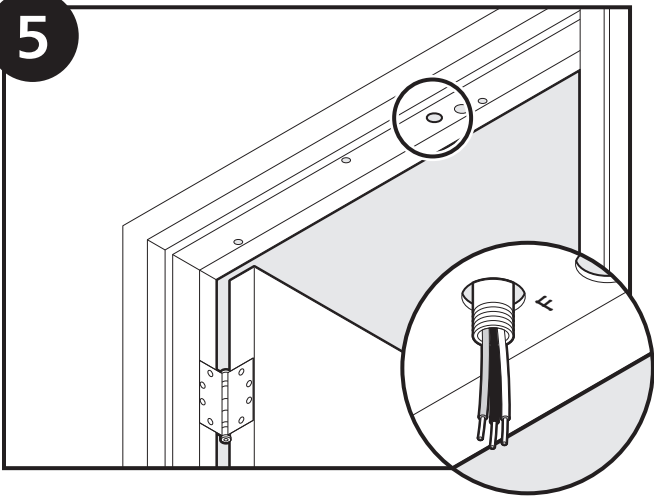
If mounting on the push side of the door: Take into consideration proximity of sensor to door frame, length of sensor wire and the vestibule area available.



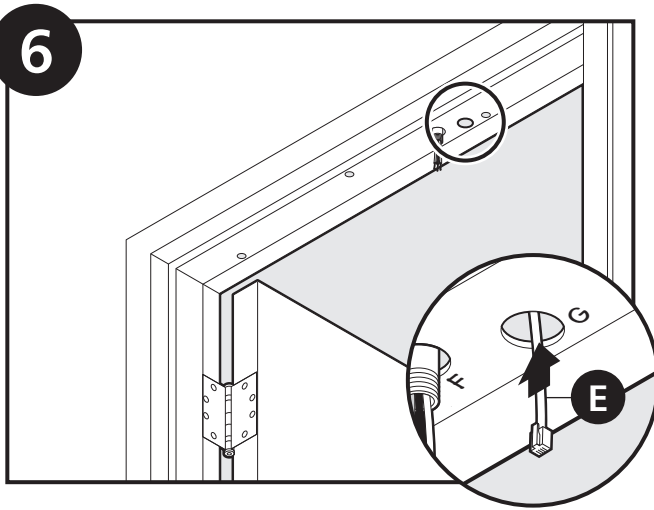
If mounting on the pull side of the door: Take into consideration proximity of sensor to door frame, length of sensor wire and the vestibule area available.

Power cable within the walls and ceiling space is to be protected using rigid conduit or flexible armored cable (check local and national electrical codes).

If using rigid conduit 1/2" trade size should be used and the conduit should protrude 1/2" to 5/8" from the door jamb. If using flexible armored cable, Arlington Industries 38AST clip fitting may be used.

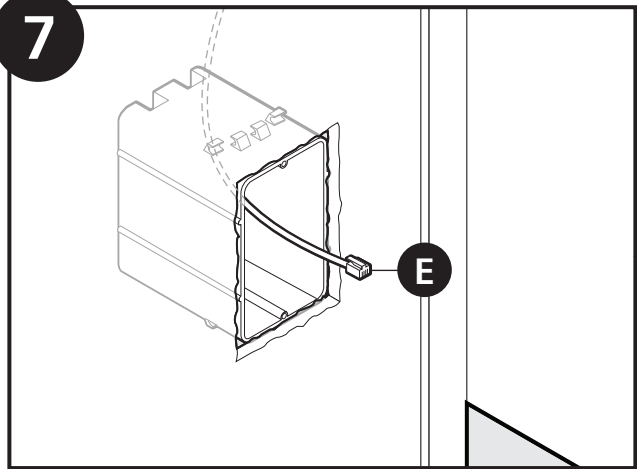


Install power cable with minimum conductor size as required by local codes, through the "F" hole for left hand door or "E" hole for right hand door, in the door jamb. DO NOT CONNECT TO LIVE CIRCUIT AT THIS TIME.

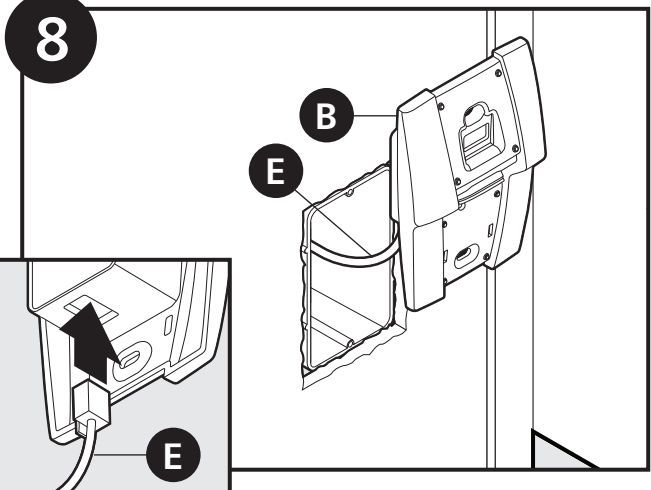


Insert sensor cable through the "G" hole for left hand door or "D" hole for right hand door, in the door jamb. If installing multiple sensors, refer to Adding Additional Sensors section

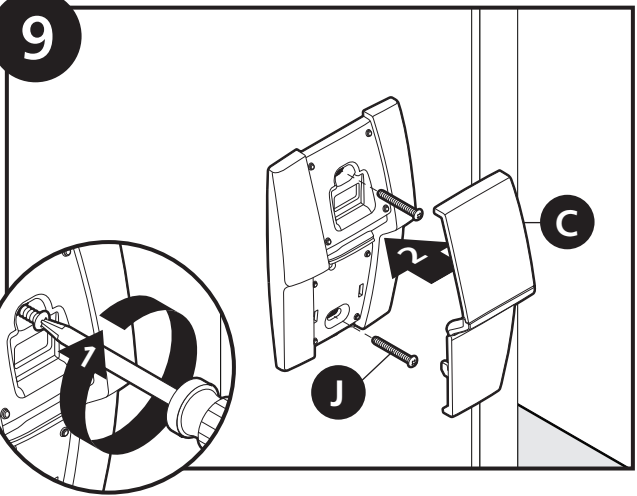
If using optional electric strike, see Electric Strike Installation section, page 10.



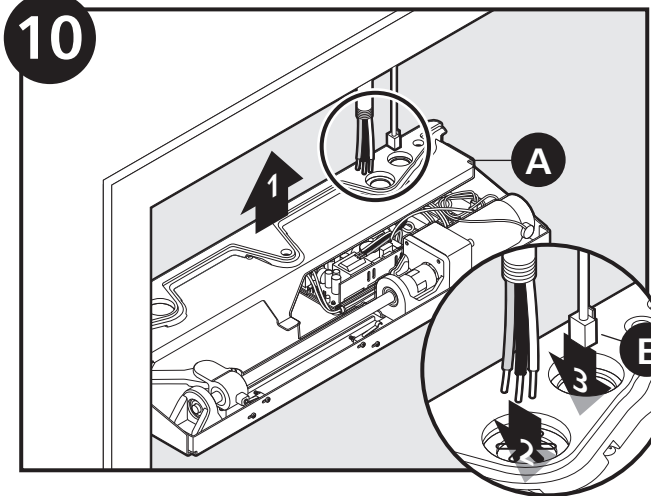
Feed sensor cable from hole in the door jamb to the cut-in box. Pass cable through box and install box into wall (be sure the box is properly grounded). If longer sensor cable length is needed, connect the sensor extension cable (#1800383) to the provided sensor cable.



Connect sensor cable to the back of sensor plate.



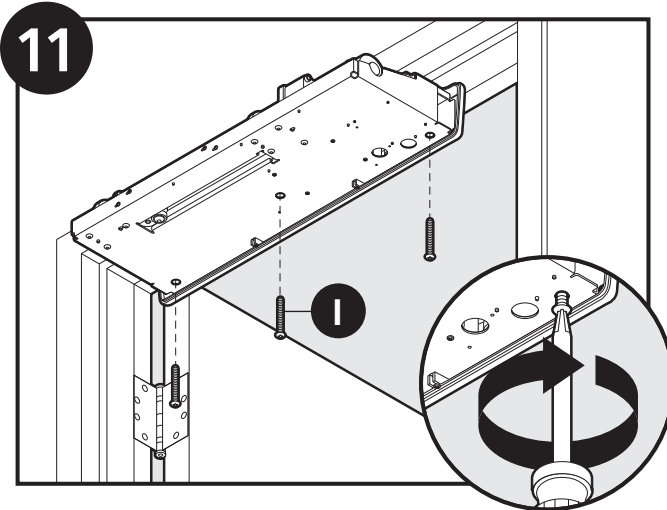
Install the sensor plate to the cut-in box with two screws and snap the sensor cover into place.



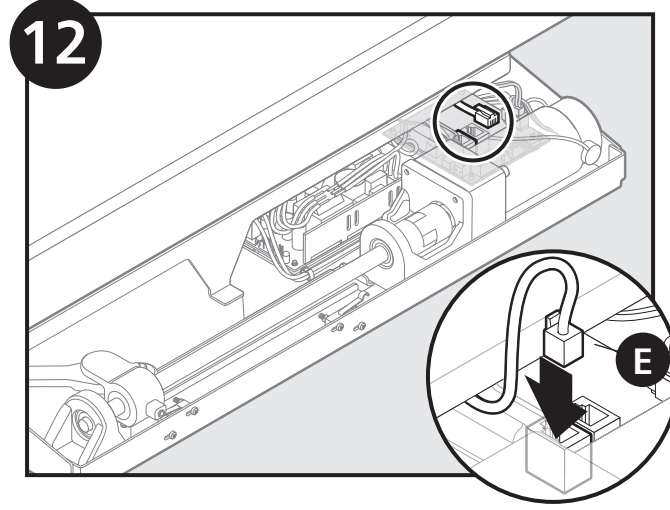
Position Auto Door unit near door jamb and pass all cables through respective holes into unit.



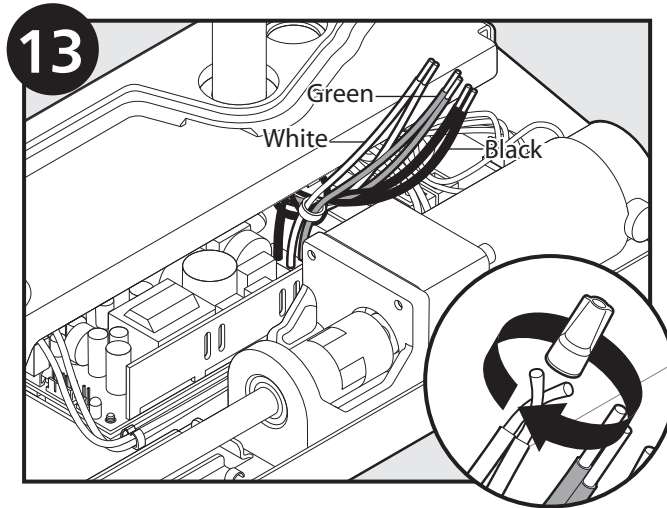
# Installation



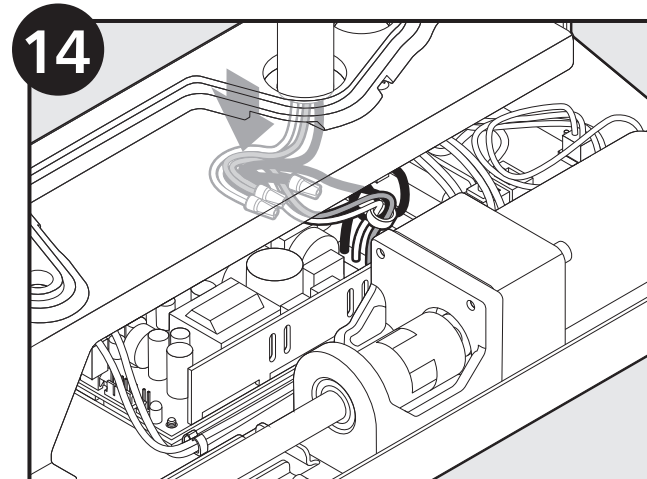
Hold unit up to door jamb and install 3 mounting screws into frame.



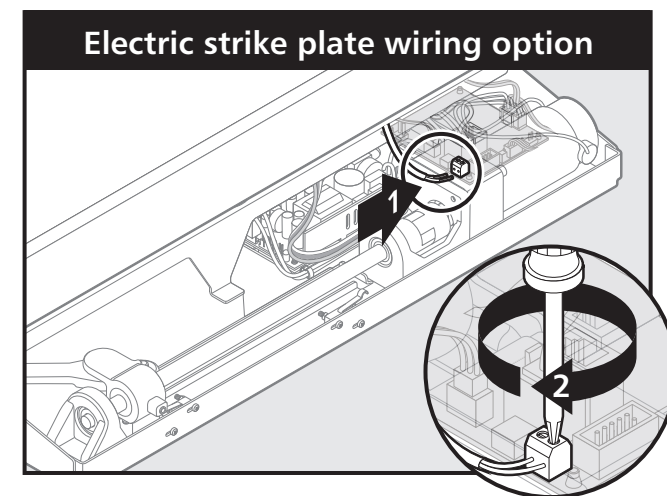
Plug sensor wire into one of the ports on control board.



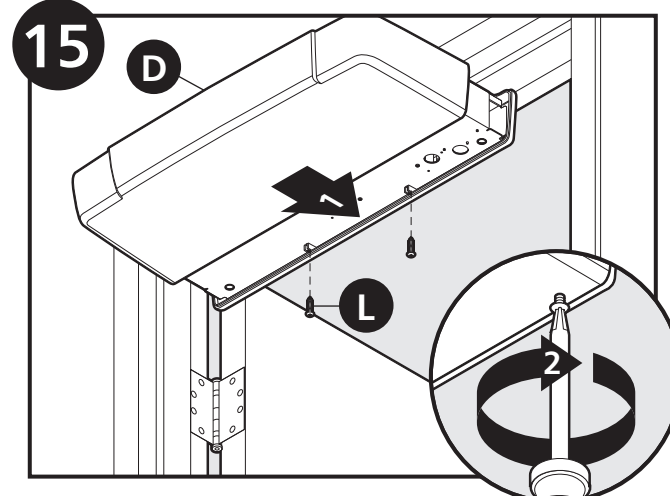
Connect in-coming power wires to pigtail wires in unit.



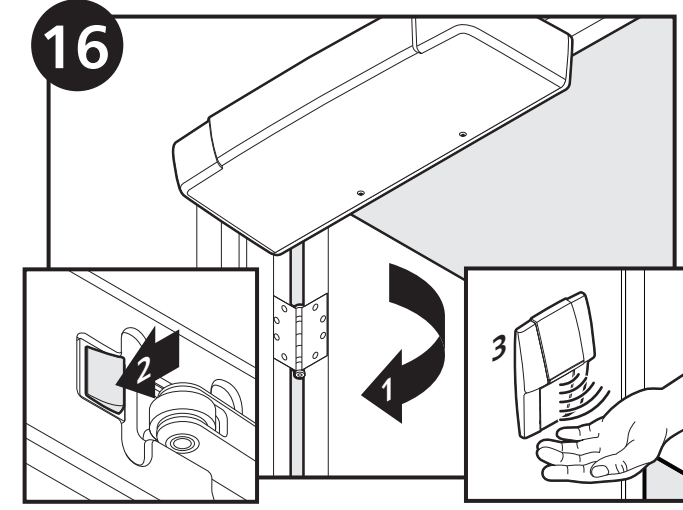
Store the connected wires back in the unit away from moving parts. Avoid excessive extra wiring inside the unit.



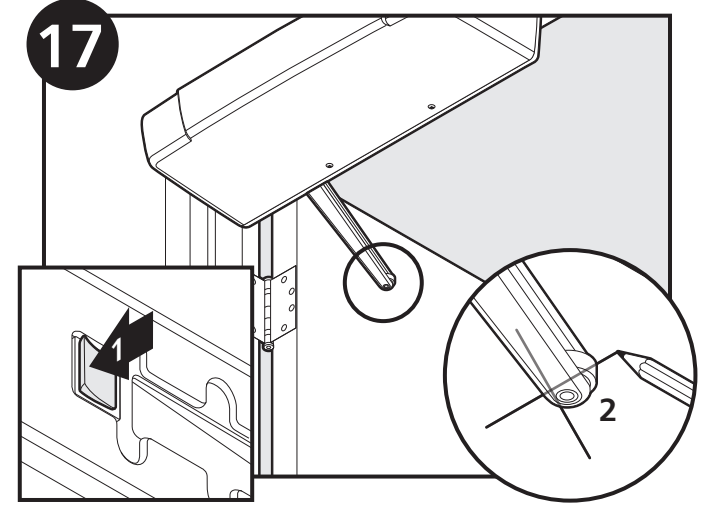
Insert electric strike wires into screw terminals on control board and tighten.



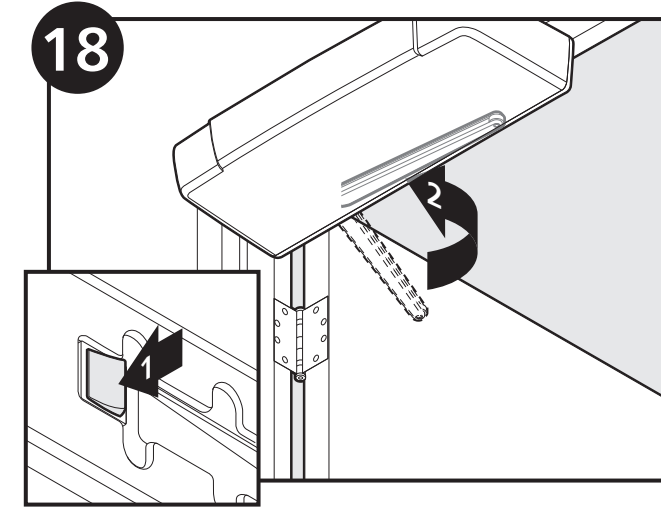
Slide main cover over main unit. Attach main cover to main unit with two screws. **CONNECT POWER.**



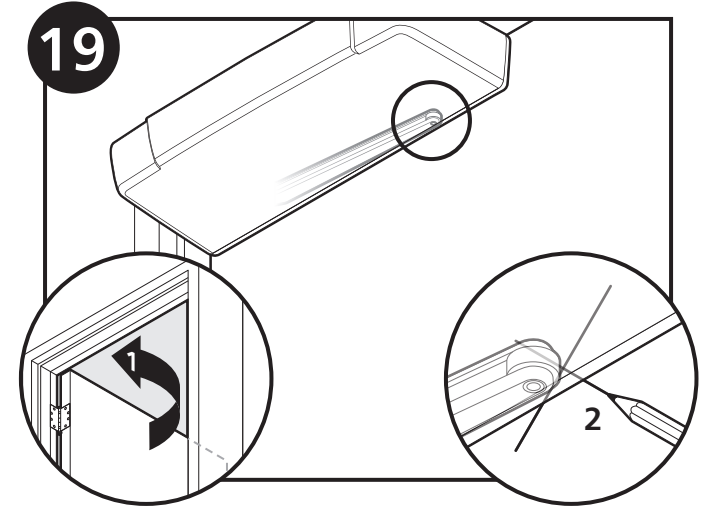
Hold door in 90° position. Turn the unit on using switch in front of main unit. Wave hand under front of sensor.



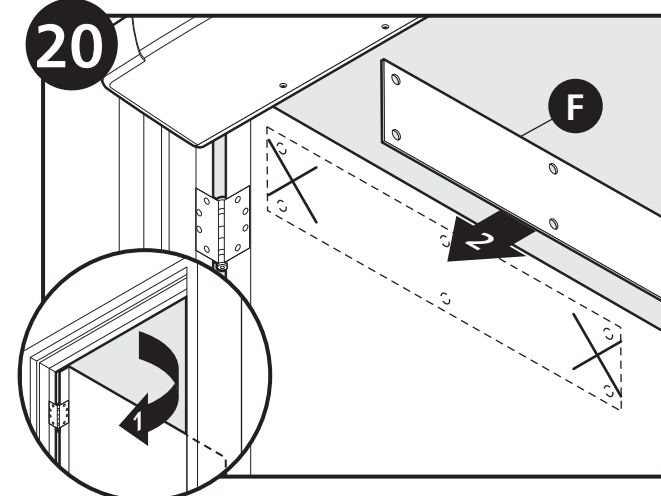
When the arm reaches the extended position, turn the unit off. Mark an X where the roller arm contacts the door.



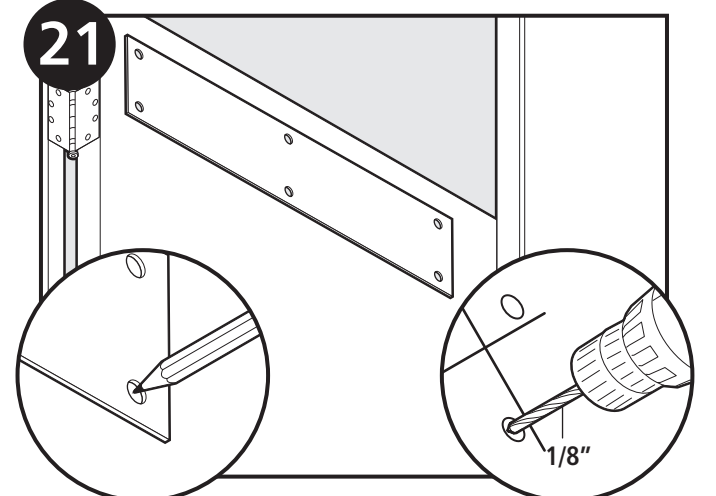
Turn the unit on and the arm will retract.  
**! Keep hands and tools clear of retracting arm.**



Close the door. Mark another X where the roller end of the arm contacts the door in the closed position.

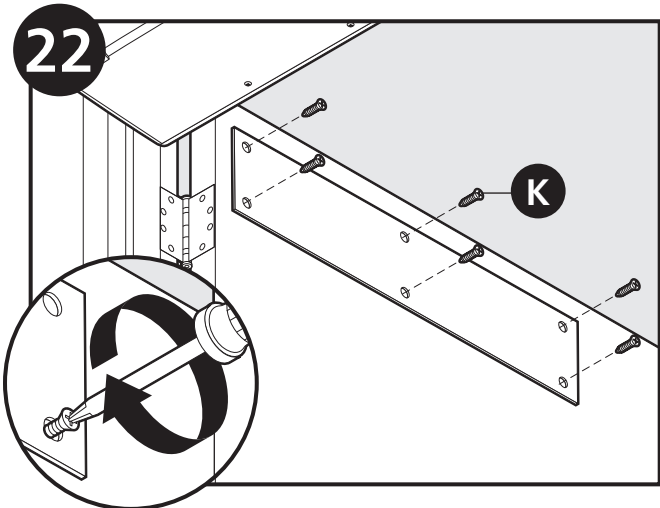


Open door. Center roller plate over X marks vertically and horizontally.

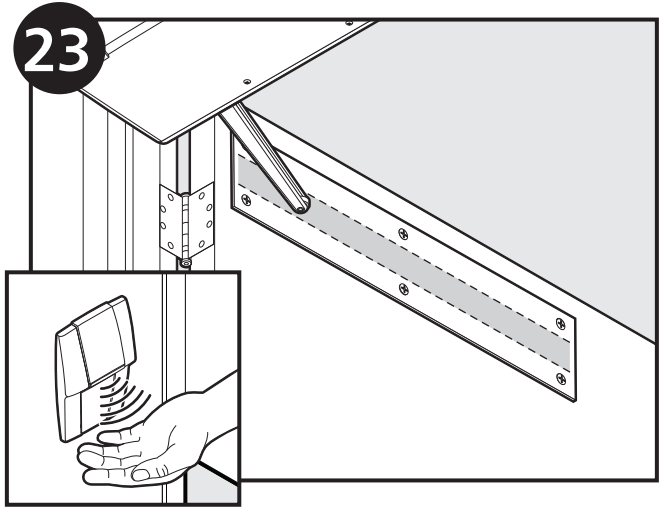


Mark holes. Drill pilot holes with (1/8\") drill bit.

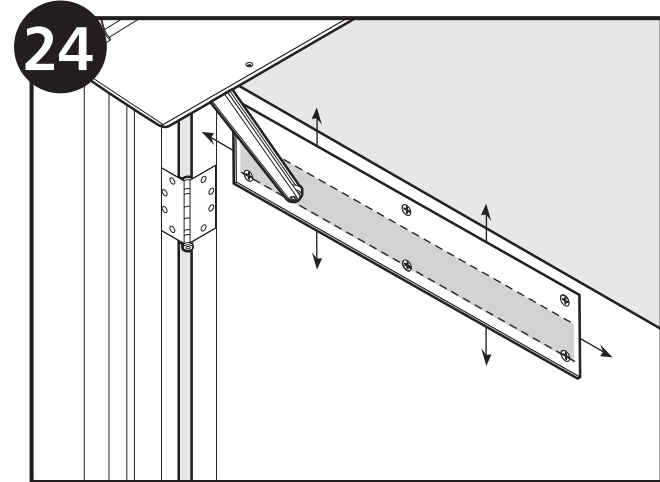
Installation



Attach plate to door with six screws.

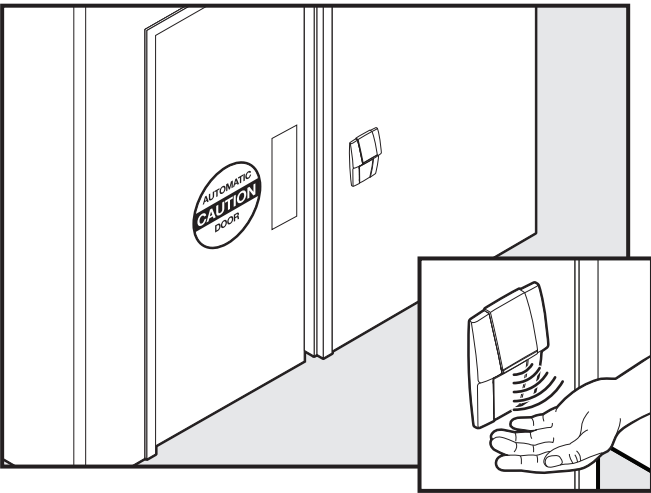


With unit on, wave hand in front of sensor. Observe path of roller on the roller plate (it should ride between the screw heads and stay on the plate).



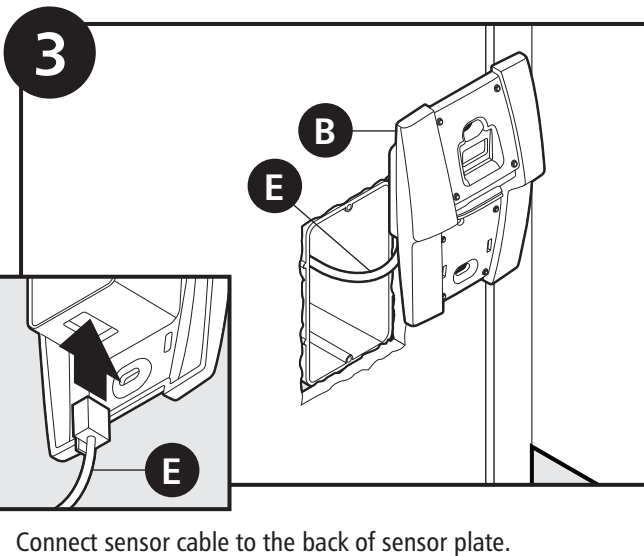
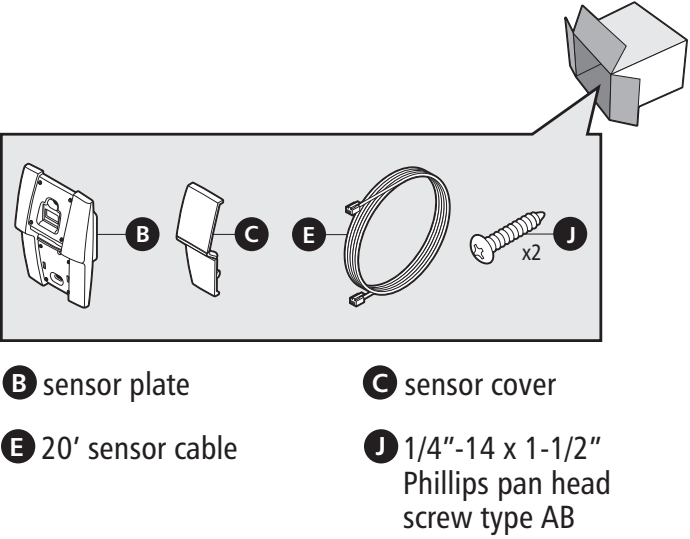
If roller rides off the plate or over screw heads, adjust placement of roller plate.

Operation

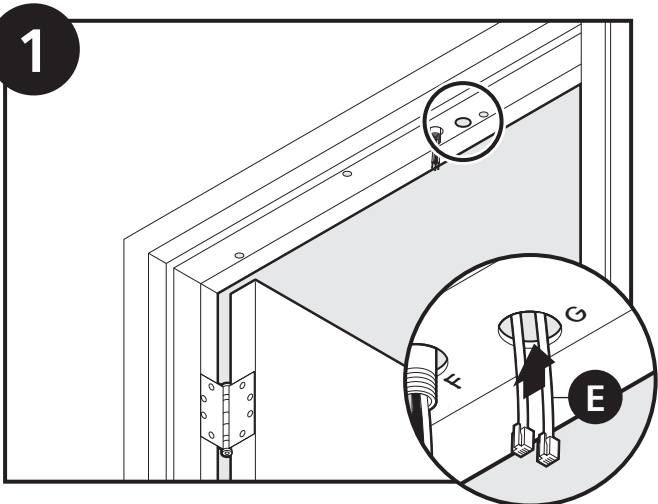


Wave hand in front of sensor to open door.

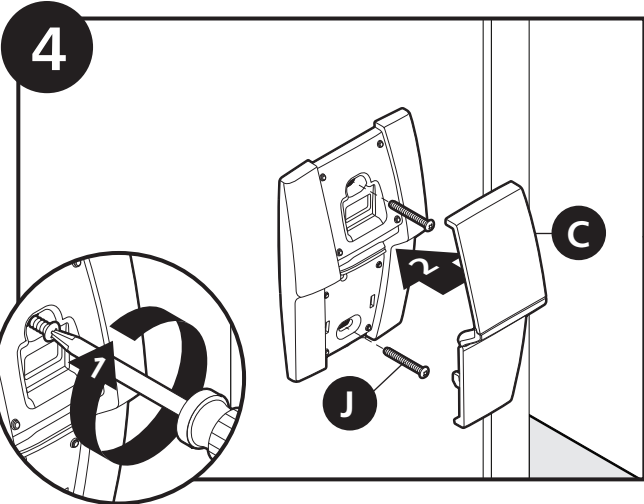
Additional Entrance Sensor Installation



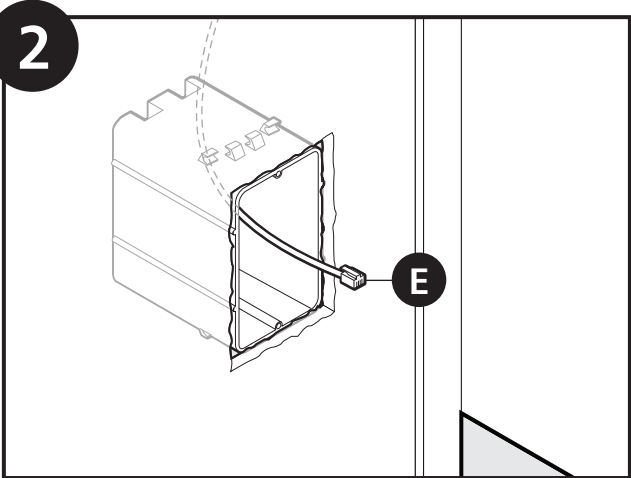
Connect sensor cable to the back of sensor plate.



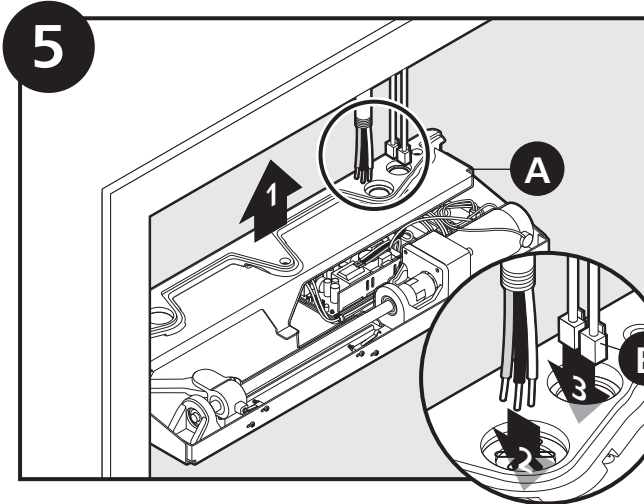
Insert sensor cables through the "G" hole in left hand doors (or "D" hole in right hand doors).



Install the sensor plate to the cut-in box with two screws and snap the sensor cover into place.



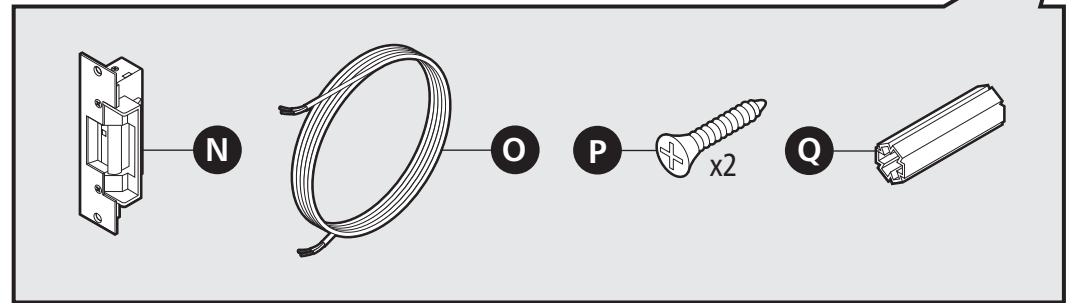
Feed sensor cable from hole in the door jamb to the cut-in box. Pass cable through box and install box into wall (be sure the box is properly grounded). If longer sensor cable length is needed, connect the sensor extension cable (#1800383) to the provided sensor cable.



Position Auto Door unit near door jamb and pass all cables through respective holes into unit.

# Electric Strike Package Contents

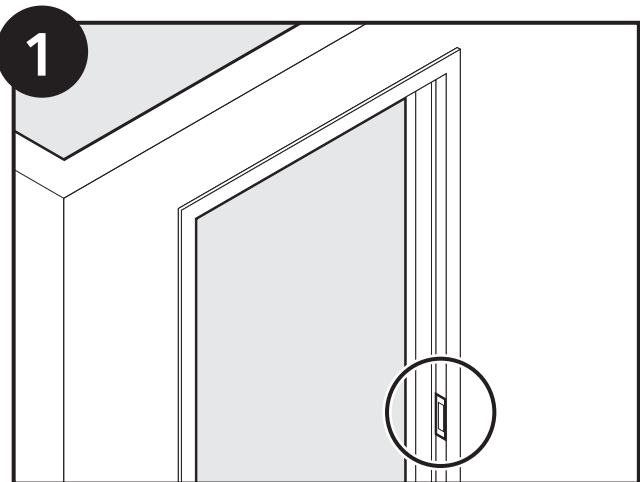
Please confirm that all items shown in the image below are included in the packaging. If any parts are missing, please call customer service at 1-866-524-5233.



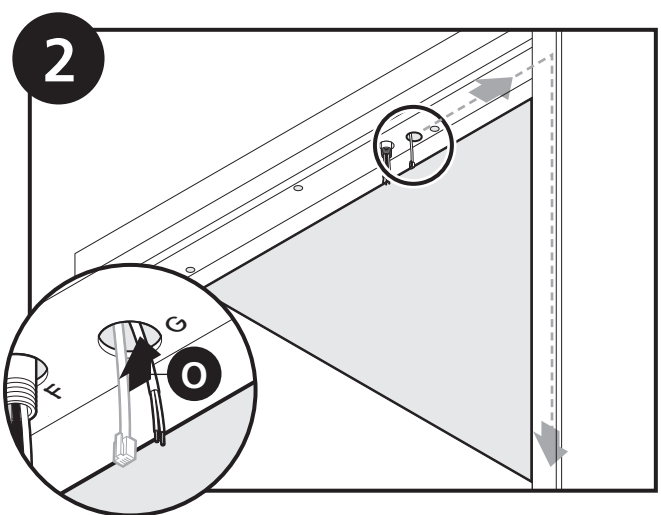
## Parts List

**N** electric strike      **O** electric strike cable      **P** electric strike screws      **Q** electric strike anchors

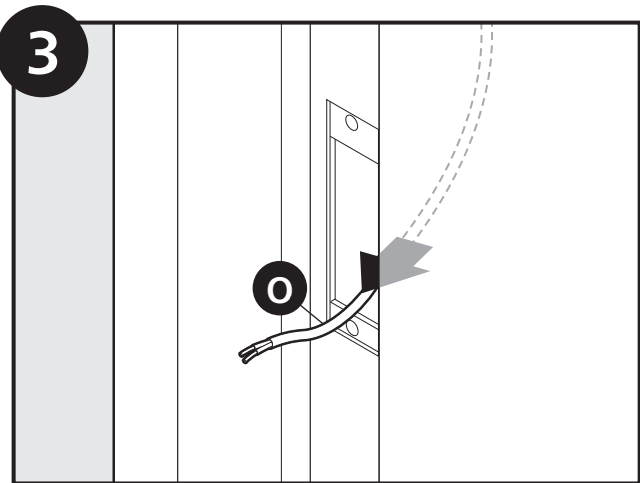
# Electric Strike Installation



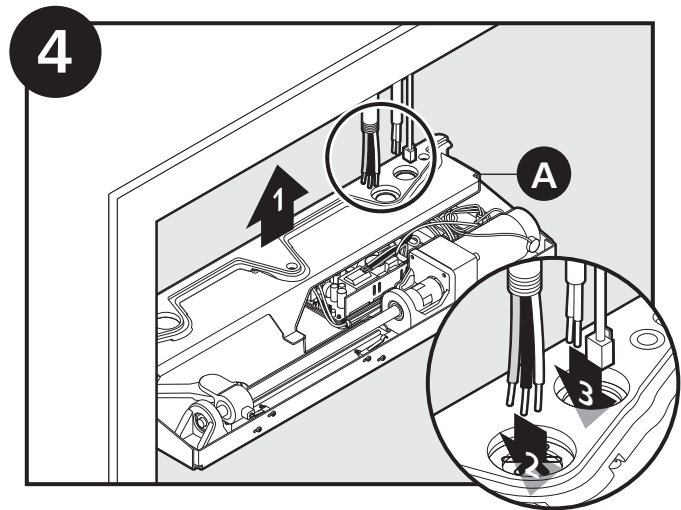
Remove existing door catch.



Insert electric strike wires through the "G" hole in left hand door (or hole "D" in right hand door) in the door jamb.

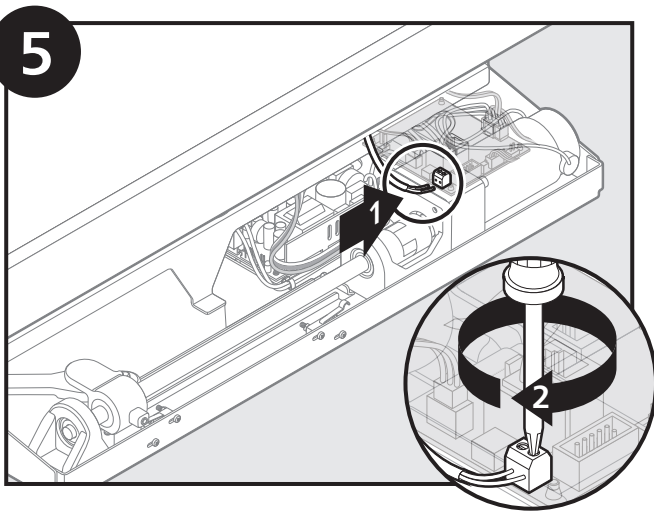


Feed electric strike wires from hole in the door jamb and pass through door catch opening.

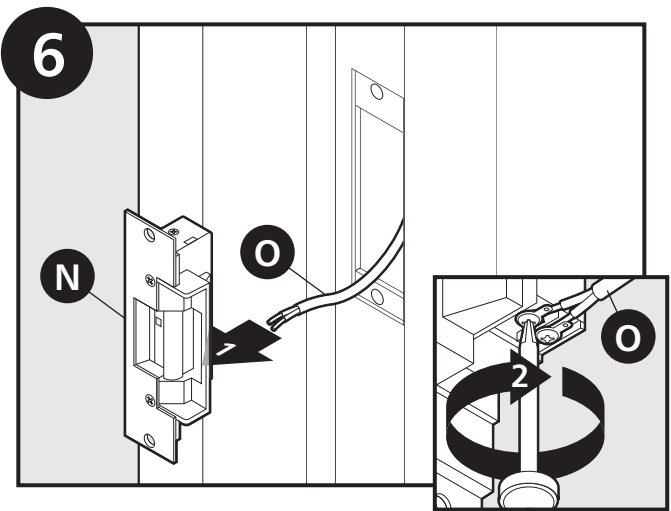


Position Auto Door unit near door jamb and pass all cables through respective holes into unit (proceed with installation from step 10).

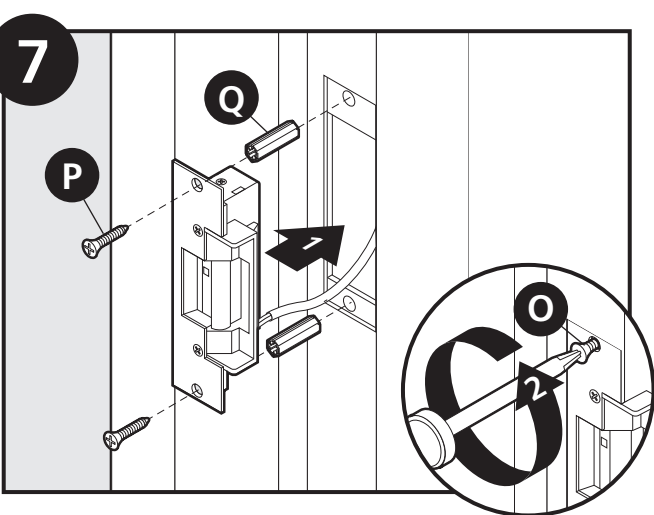
# Electric Strike Installation



Insert electric strike wires into screw terminal and tighten.



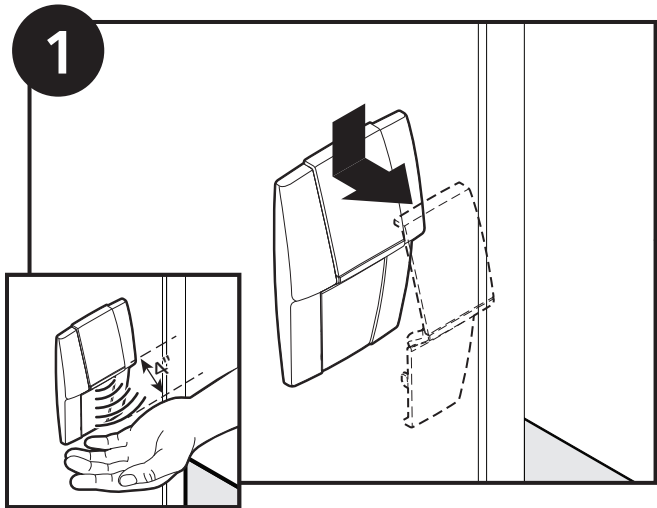
Connect electric strike wires to strike plate.



Fit electric strike to existing door frame and mount.

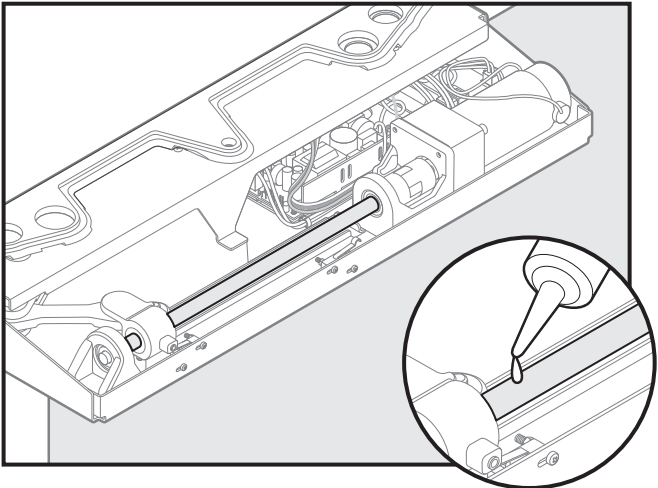


Sensor Adjustment

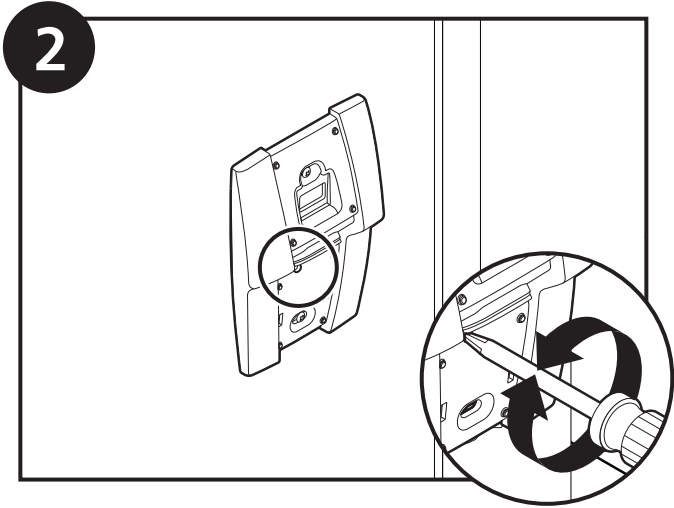


The sensor is factory adjusted for a 4" sensing distance (sensor range adjustable from 1" to 6"). To increase or decrease this distance, remove sensor cover by pushing down from top.

Maintenance



Lubricate entire length of screw tread every six months using molybdenum disulfide grease such as Sta-Lube Synthetic Grease (Sta-Lube part no. SL3301).



Locate adjuster hole and using a small screwdriver, carefully adjust the sensing distance potentiometer (clockwise to increase range). When preferred sensing distance is achieved, replace sensing cover.

Auto Door Troubleshooting Guide

PROBLEM		POSSIBLE CAUSE	REMEDY
1	Door opening speed slows down significantly	Overloading due to closer spring tension	Refer to your door closer instruction manual to adjust the door closer so that the door opening resistance is less than 7 lbs., measured at the latching edge of the door.
		Obstruction	Remove obstruction from the opening pathway of the Auto Door
2	Door opens halfway, stops and retracts	Overloading	Reduce door closer's spring tension to less than 7 lbs.
		Obstruction	Remove obstruction from the opening pathway of the Auto Door
3	The roller on actuator slips off the roller plate	The unit is not installed horizontally, or mounting screws are too loose.	Correct unit to horizontal position by way of washers or spacers to ensure Auto Door is firmly mounted
4	When fully opened, door bangs into wall or door stopper	Opening angle is incorrect.	Move Auto Door unit left/right to correctly reposition the unit.
		Door closer back check setting is too weak.	Refer to your door closer instruction manual to adjust back check setting on door closer.
5	Recently installed and unit is sluggish or stops mid stroke	1. Spring Tension on door closer is too strong	Refer to your door closer instruction manual to adjust the door closer so that the door opening resistance is less than 7 lbs., measured at the latching edge of the door.
		2. Obstruction	Remove obstruction from the opening pathway of the Auto Door
		3. Excessive door size/weight	Ensure that the interior door dimensions are between 34"-42" and the door weight is less than 170 lbs.
6	Unit will not open door	Unit is turned off	Turn unit on (Red LED will light up when powered).
		Faulty sensor connection	Ensure sensor wire is securely connected in Auto Door unit. If problem persists, contact RCP for a replacement (1-800-347-9800)
		Unit may have timed out.	If unit timed out, reset power by turning unit off, wait 5 seconds, and turn unit back on.
		Electric strike is damaged or jammed.	Ensure electric strike wire is securely connected in Auto Door unit. If problem persists, contact RCP for a replacement (1-800-347-9800)
7	Sensor does not respond or LED doesn't light up when I wave	No power to sensor	Ensure Auto Door is turned ON.  Turn unit off and check sensor wire connections. If problem persists, contact RCP for a replacement (1-800-347-9800)
		Defective Sensor	Contact RCP for a replacement (1-800-347-9800)
8	Grinding noise during operation	Damaged door hinges	Make sure door hinges are not damaged, are in working condition, and lubricated regularly. Replace hinges if needed.
		Periodic maintenance on Auto Door is needed.	Turn power off. Remove Auto Door cover and lubricate entire length of screw thread using molybdenum disulfide grease (This should be done every 6 months).
		Too much friction due to excessive door size/weight	Ensure that the interior door dimensions are between 34"-42" and the door weight is less than 170 lbs.
9	Red LED indicator is flashing	Object interference detection occurred three times in a row (Red light flashes 1x every four seconds)	Unit is in standby mode, reset power by turning unit off, wait 5 seconds, and turn unit back on.
		Control board failure (Red light flashes 2x every two seconds)	Unit over-current detection failure, contact RCP for a replacement (1-800-347-9800)